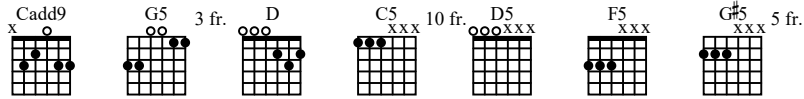


# SHINE

As recorded by Collective Soul

(From the 1993 Album HINTS, ALLEGATIONS AND THINGS LEFT UNSAID)



**A** Intro All guitars except elec. gtr: III tuned Dropped-D 1/2 step down C#,G#,C#,F#,A#,D#

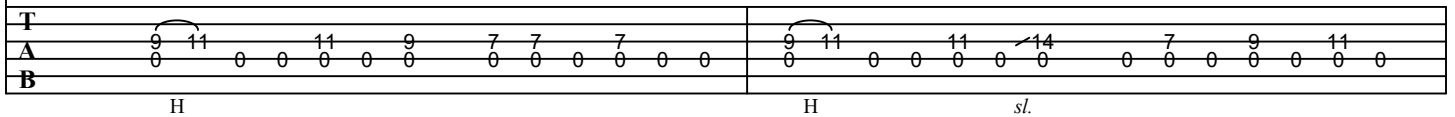
Gtr: III 1/2 Step Down D#,G#,C#,F#,A#,D#

Slow Rock  $\text{♩} = 75$   
D

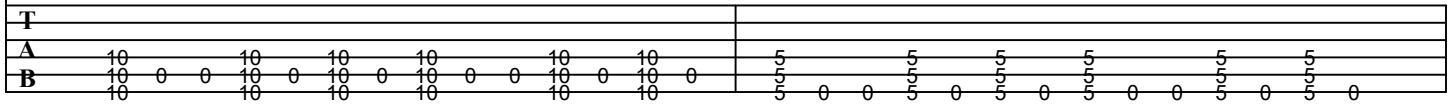
D



Gtr I *mf*  
P.M.-----|



C5 A A C5 A C5 A C5 A A C5 A C5 A G5 D D G5 D G5 D G5 D D G5 D G5 D



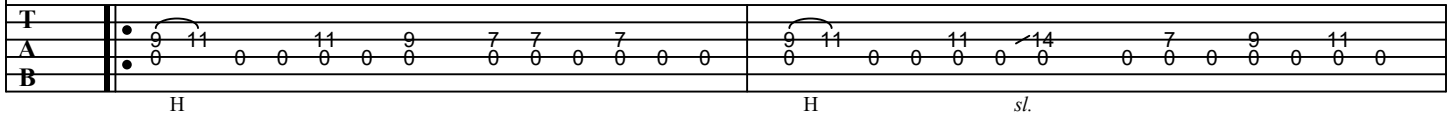
**B** Verse

$\text{♩}$   
D

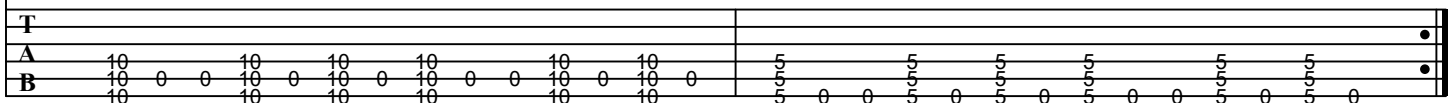
D



P.M.-----|



C5 A A C5 A C5 A C5 A A C5 A C5 A G5 D D G5 D G5 D G5 D D G5 D G5 D



**C** Pre-Chorus

D5 F5 D5 F5 D5 F5 D5 G5 D5 F5 D5 F5 D5 F5 D5 G5 G#5

9

Gtrs I, II *f*

T  
A  
B

0 0 0 3 0 0 3 0 0 3 0 0 3 0 0 5 5

**D** Chorus

(3rd time on D.C.) To Coda

Cadd9 G5 D

11

3x

Gtr IV

T  
A  
B

10 10 10 5 5 5 5 5 0 0 0 0 0 0 0 0

Gtr V

T  
A  
B

7 (7) 8 7 7 10  
4 (4) 5 4 4 7

*sl. sl.*

D D

13

*mf*

P.M.-----|

T  
A  
B

9 11 11 9 7 7 7 0 9 11 11 14 7 9 11  
0 0 0 0 0 0 0 0 0 0 0 0 0 0 0

H H *sl.*

C5 A C5 A C5 A C5 A C5 A C5 A G5 D5 G5 D5 G5 D5 G5 D5 G5 D5 G5 D5 D.S.

15

T  
A  
B

10 0 0 10 0 10 0 10 0 0 10 0 10 0 5 0 5 0 5 0 5 0 5 0 5 0 5 0

### **E** Guitar Solo Double-time Feel

[illegible]

The musical score for "Cadd9" consists of three staves. The top staff is a guitar melody in treble clef with a key signature of one sharp (F#). It begins with a Cadd9 chord and features a series of eighth and sixteenth notes, including a triplet of eighth notes. The middle staff is a vocal line in treble clef with a key signature of one sharp (F#). It starts with a Cadd9 chord and contains a series of eighth and sixteenth notes, including a triplet of eighth notes. The bottom staff is a bass line in bass clef with a key signature of one sharp (F#). It includes fingerings (10, 13, 10, 13, 10, 12, 10, 12, 10, 12, 10, 12, 10, 13, 10, 13, 10, 13, 10, 13, 10) and a series of eighth and sixteenth notes, including a triplet of eighth notes. The piece is in 4/4 time and is labeled "Cadd9" at the beginning.

20

G5

D

Full

1/2

Full

sl. P

sl.

P

23

Cadd9

Full

sl.

T 14 13 13 14 13 14 13 10 12 10 12 10 12 13 12 12 10

A

B

24

G5

Full

P H

T 10 10 12 12 (12) 12 10 10 10 12 10 12

A 12 10 12 10 12 10 12 12 10 12

B 12 10 12 10 12 10 12 10 12 10 12

25

Coda

Gtr IV D

Cadd9

G5

Gtr II

T

A 0 0 0 0 0 0 0 0 0 0 10 10 10 10 10 10 10 10 5 5 5 5 5 5 5 5 5 5

B 0 0 0 0 0 0 0 0 0 0 10 10 10 10 10 10 10 10 5 5 5 5 5 5 5 5 5 5

27

D

Cadd9

G5

T

A 0 0 0 0 0 0 0 0 0 0 0 0 0 0 0 0 10 10 10 10 10 10 10 10 5 5 5 5 5 5 5 5 5 5

B 0 0 0 0 0 0 0 0 0 0 0 0 0 0 0 0 10 10 10 10 10 10 10 10 5 5 5 5 5 5 5 5 5 5

29

D Cadd9 G5

31

D Cadd9 G5

33

D5 F5 D5 F5 D5 F5 D5 G5 D5 F5 D5 F5 D5 F5 D5 G5 G#5

35

D5 F5 D5 F5 D5 F5 D5 G5 D5 G5 D5 G5 D5 G5 G#5